

rialto®

Cranial Plate & Screw System

CE
0476

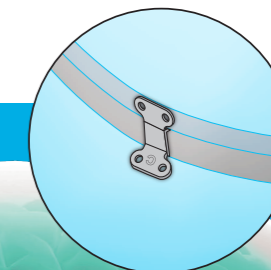
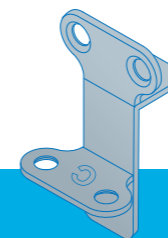
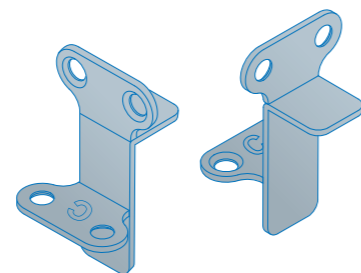
Cizeta
Surgical

Cizeta Surgical srl
Via Caselle, 76
40068 San Lazzaro di Savena (Bologna)
info@cizetasurgical.it – cizetasurgical.com

rialto®

Cranial Plate & Screw System

Cizeta
Surgical



BRACKET
SYSTEM FOR
CRANIAL
SURGERY

Distributed by
ntplast®
advanced biomedical solutions
NtPlast s.r.l.
Via Gaetano Donizetti, 20
00198 Roma RM - Italy
info@ntplast.com
www.ntplast.com

Distributed by

ntplast®
advanced biomedical solutions

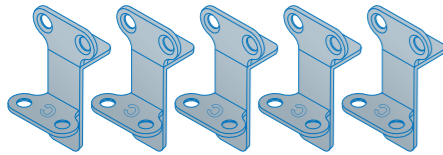
REV00 2022-04

rialto®

Cranial Plate & Screw System

5 pcs

RIALTO CRANIAL PLATE



1 pc

STERILIZATION CONTAINER



1 pc

SCREWDRIVER

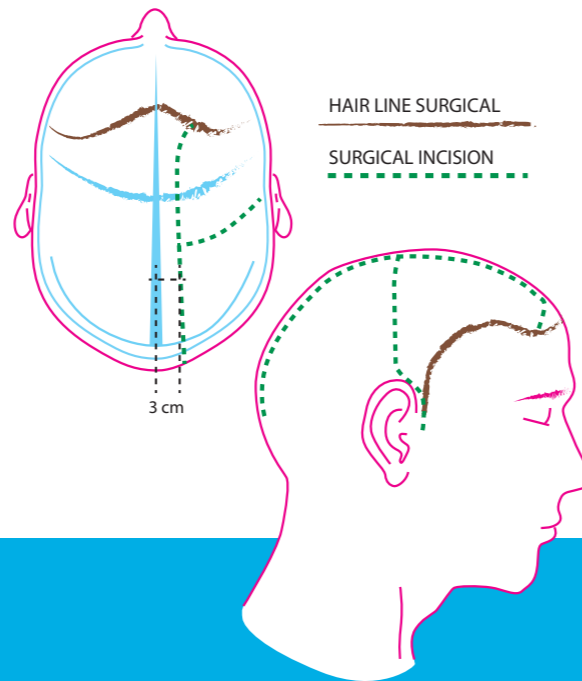


20 pcs

SCREWS

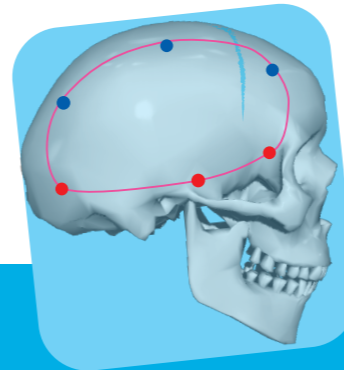


1 SKIN INCISION



2 HOLES FOR OPENING OF THE BONE FLAP

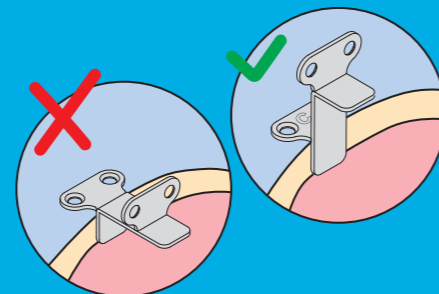
- SUPEROMEDIANALLY TO THE INION
- BASE OF THE TEMPLE
- FRONTAL-BASAL AREA
- ADDITIONAL HOLES



3 POSITIONING RIALTO BRACKETS

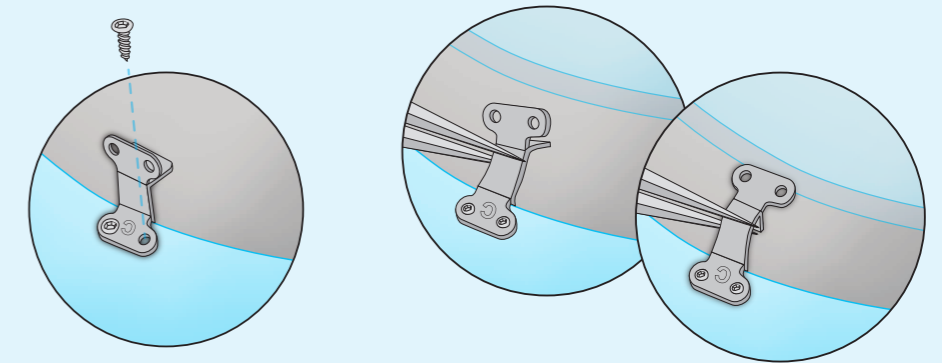
5 Cranial RIALTO brackets

IMPORTANT
The letter C must be looking up



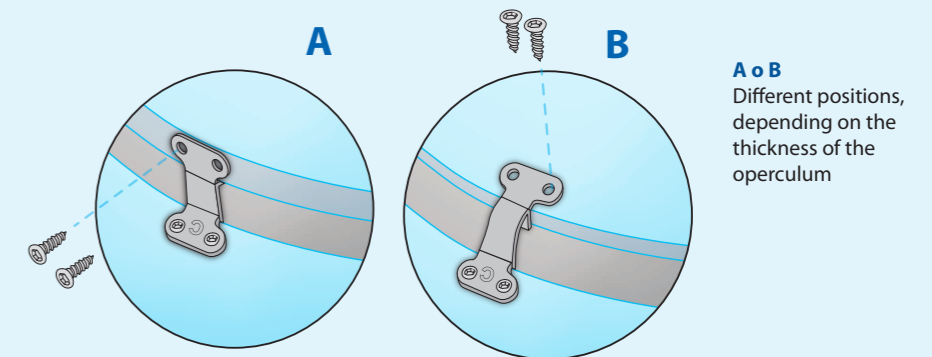
4 BRACKETS FIXING AND MODELING

Once the 5 brackets have been fixed on the skull, **gently shape** them to allow the bone flap to rest on the **bracket shelves**.



5 OPERCULUM FIXING

Once the brackets have been modeled so as to allow the bone flap to rest firmly on the shelves, fix them with 2 screws each.



6 SUTURE

To help the soft tissues move closer to each other, usually you just need to place two strong, full-thickness crisscross pulling points at the corners of the front and back flaps.

